



Lloyd's Register



FDA



GL
OPERATING 2417

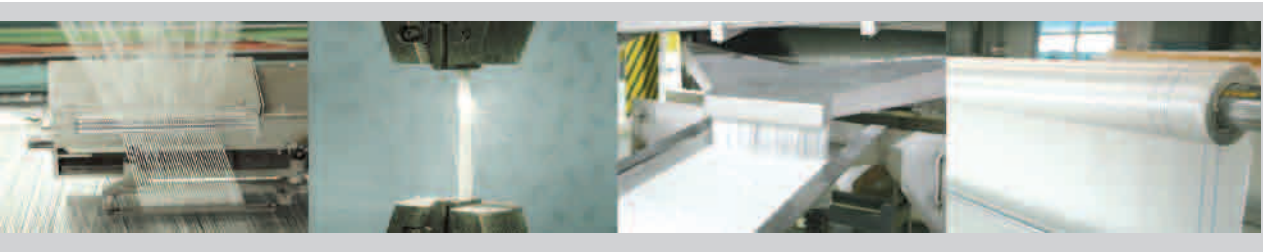
SGS



泰山玻璃纤维
Taishan Fiberglass

Fiberglass Solutions to **THERMOPLASTICS**

Sinoma 泰山玻璃纤维有限公司
中国中材 Taishan Fiberglass Inc.



Extrusion & Injection

Continuous Roving for Thermoplastics
Chopped Strands

LFT (Long Fiber Thermoplastic): LFT-G and LFT-D

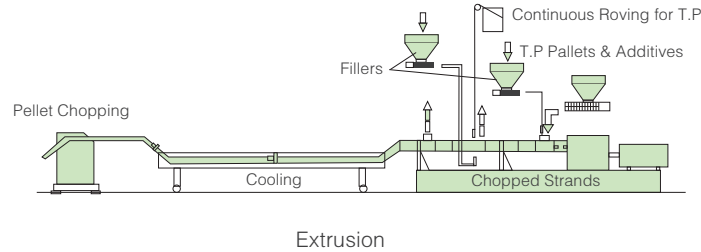
LFT Roving

GMT (Glass Mat reinforced Thermoplastics)

GMT Roving

Extrusion & Injection

Thermoplastic resin, additives and fiberglass reinforcements (roving or chopped strands) are mixed, compounded by screws and extruded into pellets, which is further processed to designed parts by injection molding.



Fiberglass Products for Extrusion & Injection

Continuous Roving for Thermoplastics



【 Description 】

Continuous roving for thermoplastics includes direct roving or assembled roving, coated with silane-based sizing and used for reinforcements of PA, PP, PBT, PET, ABS, AS with good resin compatibility.

【 Description 】

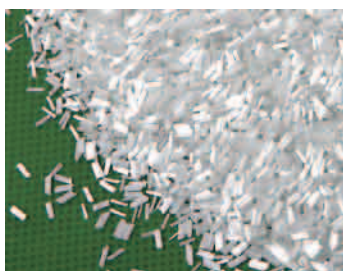
- ◎ High abrasion resistance and low fuzz
- ◎ Consistent linear density
- ◎ Good dispersion in resin matrix
- ◎ Excellent compatibility with resin
- ◎ Superior mechanical properties of composites

【 Identification of Product Code 】

Eg. ERS200-13-T635B
 E: E-glass
 RS: Assembled /Multi-end Roving
 200: Linear Density 2000tex.
 13: Filament Diameter 13 μm
 T635B: Sizing & Product Code

【 Products 】

Product Code	Linear Density tex	Linear Density yield	Filament Diameter μm	Resin Compatibility
T635B	1000,2000,2400	497,248,207	13,14,17	General Purpose
T635C	1000,2000,2400	497,248,207	13,14,17	General Purpose
TCR735	2000	248	13	PA
TCR736	2000	248	13	PBT, PET
TCR738	2000	248	13	PP
TCR739	2000	248	13	AS, ABS



Chopped Strands

【 Description 】

Chopped Strands is made by chopping E-glass fiber, coated with special silane-based sizing and used for reinforcements of PA, PP, PBT, PET, ABS, AS, PC, PPO, PPS, POM, LCP with good resin compatibility.

【 Properties 】

- Excellent strand integrity, high bulk density and low fuzz
- Superior dry-use flow-ability and easy control of glass loading
- Superior wet-use dispersion & flow-ability and easy impregnation with resin matrix
- Excellent mechanical property & surface quality

【 Identification of Product Code 】

Eg. ECS10-3.0-T435N
 E: E-glass
 CS: Chopped Strands
 10: Filament Diameter 10 μ m
 3.0: Chopped length 3.0mm
 T435N: Sizing & Product Code

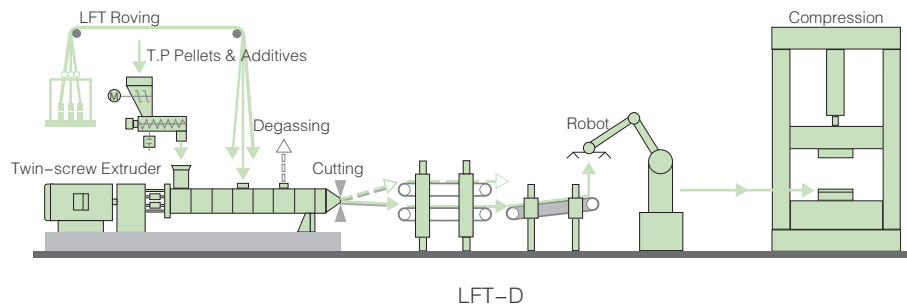
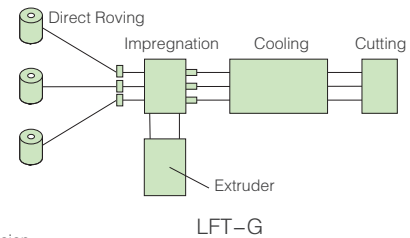
【 Products 】

Resin Matrix	Product Code	Filament Diameter μ m	Chopped Length mm	Features & Applications
PA	T435N	10,11,13	3.0,4.5	Standard Product for PA6 & PA66, FDA Approved
	T435TM	10,11,13	3.0,4.5	Excellent Hydrolysis, Glycol & High Temperature Resistance, Standard Product for PA6, PA66, PA6T, PA9T, PPA, FDA Approved
	T435A	10,11,13	3.0,4.5	Excellent Impact Resistance
PBT/PET/PC	T436H	10,11,13	3.0,4.5	Excellent Mechanical Properties, FDA Approved
	T436W	13	3.0,4.5	White Color Products, FDA Approved
	T536	13	3.0,4.5	Standard Product
PP	T438	13	3.0,4.5	White Color Products, Excellent Mechanical Properties
	T438R	13	3.0,4.5	Natural Color Products, Excellent Detergent Resistance
	T538A	13	3.0,4.5	Standard Product
ABS/AS	T439	13	3.0,4.5	Standard Product
PC	T442	13	3.0,4.5	High Mechanical Properties, glass content > 15% by weight
	T442N	13	3.0,4.5	glass content < 15% by weight
PPSLCP	T443	10	3.0	High Mechanical Properties
	T443R	10	3.0	Excellent Hydrolysis Resistance
LCP	T490	10	3.0	Standard Product
PPO	T551	13	3.0	High Mechanical Properties
	T551R	13	3.0	Excellent Hydrolysis Resistance
POM	T445	10	3.0,4.5	Standard Product

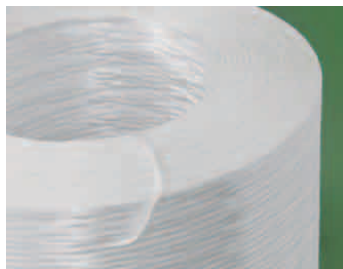
LFT (Long Fiber Thermoplastic): LFT-G and LFT-D

LFT-G: Molten thermoplastic resin & additives are impregnated with fiberglass roving in a special dispersion die and consolidated into rods, after cooling, rods are chopped into pellets, which can be further processed by injection or compression molding to final products.

LFT-D: Thermoplastic resin, additives and fiberglass roving are mixed, impregnated in a twin-screw extruder to form the compound, which is directly processed by injection or compression molding to final products.



Fiberglass Products for LFT



LFT Roving

【 Description 】

LFT roving is a direct roving coated with silane-based sizing, applicable for LFT-G & LFT-D processes and used for reinforcements of PA, PP with good resin compatibility.

【 Properties 】

- ◎ Consistent linear density
- ◎ Uniform filament tension
- ◎ High abrasion resistance and low fuzz
- ◎ Good compatibility with resin
- ◎ Excellent mechanical properties of composites

【 Identification of Product Code 】

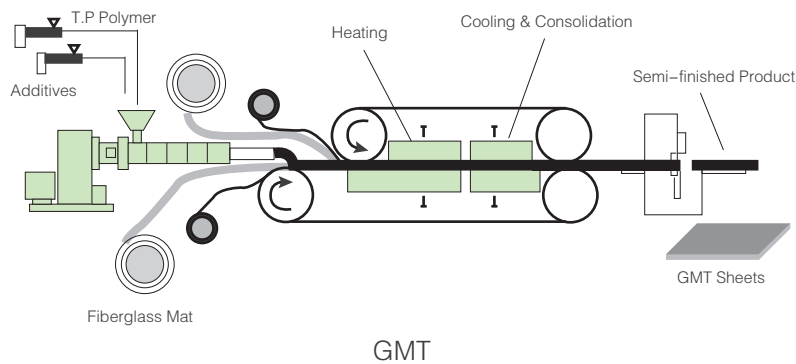
Eg. EDR240-T838
 E: E-glass
 DR: Direct Roving
 240: Linear Density 2400tex
 T838: Sizing & Product Code

【 Products 】

Product Code	Linear Density tex	Linear Density yield	Filament Diameter μm	Resin Compatibility	Application Features
T838	2400	207	17	PP	Standard Product, Multi-process Compatible
T838T	2400	207	17	PP	White Colour, Good Dispersion
T835	2400	207	17	PA	Standard Product

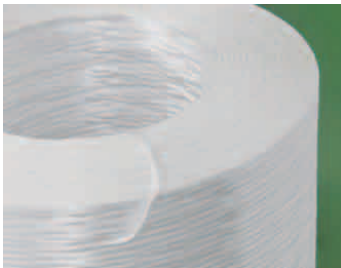
GMT (Glass Mat reinforced Thermoplastics)

Fiberglass mat is sandwiched with molten thermoplastic polymers or sheets, and the sandwich is heated, consolidated and cut after cooling into semi-finished GMT sheets, which can be further processed by compression molding to final products.



Fiberglass Products for GMT

GMT Roving



【 Description 】

GMT roving is assembled roving coated with silane-based sizing and used for reinforcements of PP resins.

【 Properties 】

- High abrasion resistance and low fuzz
- Low static and good chop-ability
- Consistent linear density
- Good dispersion and stable properties of composites
- Good compatibility with PP resins
- Excellent mechanical properties of composites

【 Identification of Product Code 】

Eg. ERS240-T986K
 E: E-glass
 RS: Assembled /Multi-end Roving
 240: Linear Density 2400tex
 T986K: Sizing & Product Code

【 Products 】

Product Code	Linear Density tex	Linear Density yield	Filament Diameter μm	Resin Compatibility	Applications
T838G	600	825	14/16	PP	GMT-UD
T986K	2400	207	14	PP	GMT-RD



About Us

Taishan Fiberglass Inc., is a wholly owned subsidiary company of China National Materials Co., Ltd., and a National Key High-tech Enterprise.

Its leading products cover several different types and specifications, including E-glass Roving, Chopped Strand Mat, Yarn, Electronic Fiberglass Fabrics, Chopped Strands, Multiaxial Fabrics, Knitted Fabrics, Woven Roving, etc., among which E-glass Roving and Chopped Strand Mat are both certified as “China Top Brand” . Its products are exported to over 60 countries and regions, including the US, Europe, ME, etc. and “CTG” has been awarded “China Well-known Trademark” .

Taishan Fiberglass Inc., is committed in scientific and standardized management and has acquired certificates of International Quality Management System (ISO9001), Environmental Management System (ISO14001); Occupational Health and Safety Management System (GB/T28001) and products are awarded Det Norske Veritas Type Approval Certificate (DNV), Lloyd’ s Register of Shipping (LR), Germanischer Lloyd (GL) and China Classification Society (CCS), etc.

Taishan Fiberglass Inc., will adhere to sustainable development and provide customers with superior products and services, to keep contributing to the progresses of China fiberglass industry and in pursuit of becoming a globally prestigious fiberglass manufacturer.



Fiberglass Solutions to Pipes & Tanks	Filament Winding; Centrifugal Casting
	Direct Roving for Filament Winding, Chop Roving, Chopped Strand Mat, Woven Roving, Axial Tape, Knitted Mat, Surface Mat, Hobas Roving
Fiberglass Solutions to Open Molding	Spray-up; Hand Lay-up
	Spray-up Roving, CSM, Woven Roving Combo Mat, Knitted Mat, Surface Mat
Fiberglass Solutions to Pultrusion	Pultrusion
	Direct Roving for Pultrusion, Knitted Mat, Surface Mat
Fiberglass Solutions to Continuous Panel Molding	Continuous Panel Molding
	Continuous Panel Roving, Chopped Strand Mat
Fiberglass Solutions to Compression Molding	SMC/BMC Compression Molding
	SMC Roving, Chopped Strands for BMC
Fiberglass Roving for Mats & Fabrics	Weaving Mat Production
	Direct Roving for Multi-axial Fabrics, Direct Roving for Geo-grids, Direct Roving for Fabrics, Roving for Mat
Fiberglass Solutions to Thermoplastics	Extrusion & Injection; LFT (Long Fiber Thermoplastic): LFT-G and LFT-D GMT (Glass Mat reinforced Thermoplastics)
	Continuous Roving for Thermoplastics, Chopped Strands LFT Roving, GMT Roving
Fiberglass Solutions to Wind Energy	Prepreg (Pre-forming); Vacuum Infusion (Vacuum Bagging); Hand Lay-up
	Multi-axial Fabrics for Wind Energy, PP Core Mat
Electronic & Industrial Fiberglass Yarns	
Electronic Fiberglass Fabrics	

Sinoma 泰山玻璃纤维有限公司
中国中材 Taishan Fiberglass Inc.

Add: Economic Development Zone, Taian, Shandong, P.R.China. P.C. 271000
Tel: +86 538 6627910 (Sales Department) 6622011 (International Department)
Fax: +86 538 6622020 (Sales Department) 6627917 (International Department)
E-mail: ctgf@ctgf.com Website: www.ctgf.com